



Back Church Lane, London, E1

BUTLER & STAG



Contemporary one bedroom apartment set within a smart development in Aldgate, well located for Aldgate East and Tower Hill underground stations.



- One Bedroom Contemporary Apartment
- Third Floor
- Excellent Transport Links
- Furnished
- Smart Modern Development
- Well-Proportioned
- Historic Pocket of East London
- Available from 11th September 2025

Positioned on the third floor, this elegant property is well-proportioned and presented, featuring an open-plan fitted kitchen / living space, a generously-sized bedroom with fitted wardrobes, a modern bathroom and hallway storage.

The location is a sought after one for both transport links and leisure pursuits, blending historic London with modern conveniences. Tower Bridge, St Katharine Docks and the attractions of Shoreditch to name but a few, are all within easy reach.

Offered furnished and perfect for a discerning professional or a couple, this property is available from 11th September 2025.

EPC Rating B
Council Tax Band D



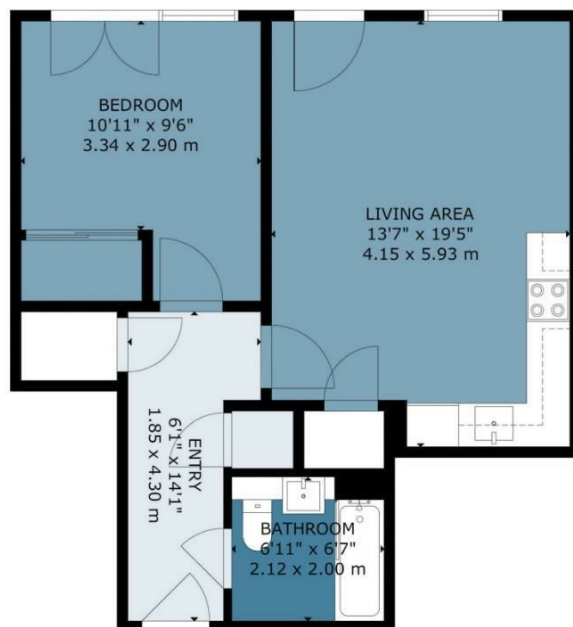


Back Church Lane, E1

Approx. Gross Internal Area 52 Sq M (565 Sq Ft)

BUTLER & STAG

Third Floor



Measurements are approximate and for illustration purposes only. While we do not doubt the accuracy and completeness, we advise you conduct a careful independent assessment of the property to determine monetary value.
© @modephoto.uk www.modephoto.co.uk

IMPORTANT NOTICE - These particulars have been prepared in good faith and they are not intended to constitute part of an offer or contract. We have not performed a structural survey on this property and the services, appliances and specific fittings have not been tested. All photographs, measurements, floor plans and distances referred to are given as a guide and should not be relied upon.

BUTLER & STAG

☎ 020 8102 1236

🏠 508 Roman Road, Bow, London, E3 5LU

✉ bow@butlerandstag.com

www.butlerandstag.uk